



**INTERIOR ALTERATION FOR:**  
**FRUITVILLE SQUARE**  
 4980 - 5000 FRUITVILLE ROAD, SARASOTA, FL.

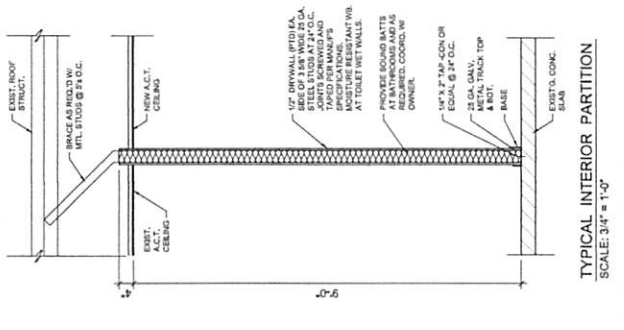
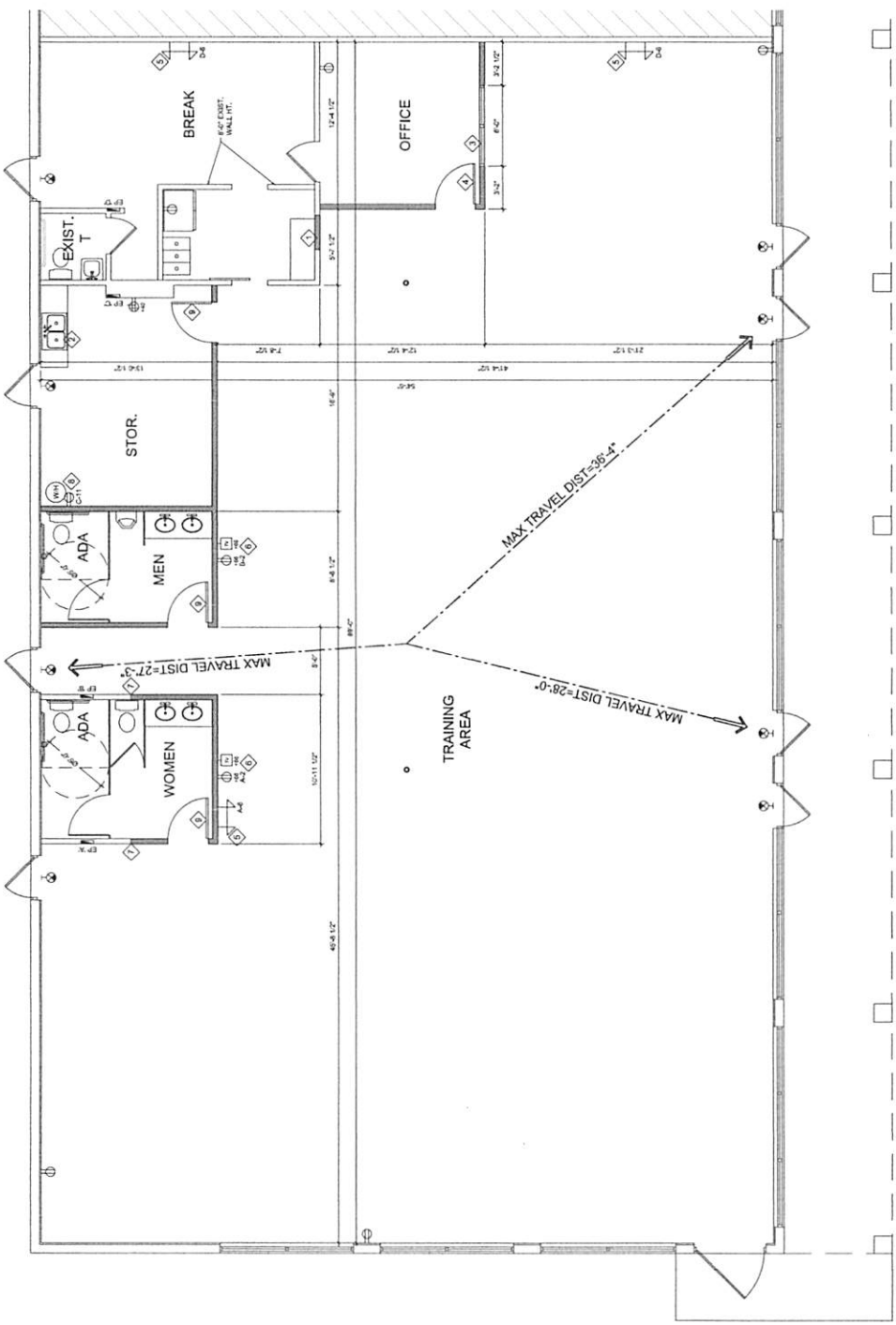
W. T. OSBORN  
 AR-0006998  
 William T. Osborn  
 2021.04.19  
 10-47.21  
 -01307

**PROPOSED FLOOR LIFE SAFETY PLAN**  
 Job No.: 2021028  
 Date: 3-2-21  
 Sheet No.:

A2.0

OSBORN SHARP ASSOCIATES  
 1333 W. UNIVERSITY AVENUE, SUITE 114A - SARASOTA, FLORIDA 34231 TEL: 941.552.2866  
 1333 W. UNIVERSITY AVENUE, SUITE 114A - SARASOTA, FLORIDA 34231 TEL: 941.552.2866 FAX: 941.552.2866

- ELECTRICAL SPARE CIRCUITS OF THE EXISTING PANELS**
- ELEC. PANEL 'X' WITH OUTLET, C-11
  - EMERGENCY LIGHT, A-6
  - LIGHT SWITCH, A-13
  - EXHAUST FAN SWITCH, A-13
  - ELEC. PANEL 'B' WITH OUTLET, B-3
  - EMERGENCY LIGHTS, D-4
  - LIGHT SWITCH, D-13
  - EXHAUST FAN SWITCH, B-13
- ALL NEW BREAKERS ARE 20 AMP EXCEPT WH OUTLET, 30 AMP



**LIFE SAFETY NOTES**

OCCUPANCY = TYPE "B" BUSINESS

CONSTRUCTION TYPE = IIB NON-SPRINKLED

OCCUPANT LOAD = 5,000 SF. / 100 = 50 PEOPLE

# OF EXITS REQUIRED = 2

# OF EXITS PROVIDED = 2

MAX. DIST. TO EXIT ALLOWED = 200'-0"

MAX. DIST. TO EXIT PROVIDED = 30'-4"

- KEY NOTES**
- 1 INF-FEL PASS-THRU OPENING MATCH EXISTING CONDITIONS
  - 2 NEW SERVICE SINK - SAME LOCATION
  - 3 NEW 4" X 6" W/CON. TOP OF W/CON @ 6'-0" A.F.F.
  - 4 NEW 3068 (SAFETY GLASS) GLASS DOOR FINISH TO MATCH EXISTING
  - 5 RELOCATED EMERGENCY LIGHTING
  - 6 NEW ELECTRICAL & CABLE TV OUTLET AT 6'-0" A.F.F. PROVIDE BLOCKING AS REQ'D. VERIFY HEIGHT W/ OWNER
  - 7 ALIGN NEW WALL TO EXISTING. MATCH EXISTING CONDITIONS
  - 8 NEW ELECTRICAL OUTLET
  - 9 NEW 3068 SOWD DOOR. FINISH TO MATCH EXISTING

**WALL LEGEND**

- NEW INTERIOR WALL W/ 3 5/8" MTL. 23 GA. STUDS FINISH AT 6'-0" & W/ 1/2" CP. BD. FINISH TO UNDERFACE OF CEILING GRID U.O.N.
- EXISTING WALL TO REMAIN
- EXISTING WALL PARTITION TO BE REMOVED